

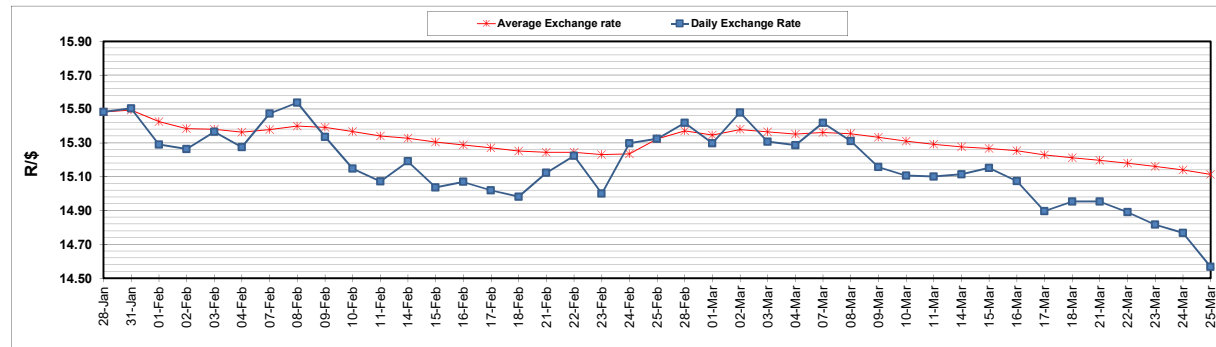
	PETROL 95 ULP	PETROL 93 ULP & LRP	DIESEL 0.05%	DIESEL 0.005%	ILL. PAR.
GAUTENG PUMP PRICE (SA c/l) AS FROM 02/03/2022	2,160.000	2,135.000	-	-	-
WHOLESALE PRICE (SA c/l) AS FROM 02/03/2022	-	-	1,948.880	1,955.280	1,318.688
SINGLE NATIONAL MAXIMUM RETAIL PRICE	-	-	-	-	1,690.000
BASIC FUEL PRICE - 25/03/2022 (SA c/l)	1,256.347	1,232.562	1,469.248	1,494.794	1,442.648
PRESS RELEASE CONTRIBUTION TO BFP 02/03/2022 - 25/03/2022 (SA c/l)	1,100.270	1,085.270	1,107.630	1,114.030	1,097.128
UNIT OVER/(UNDER) RECOVERY - 25/03/2022 (SA c/l)	(156.077)	(147.292)	(361.618)	(380.764)	(345.520)
AVERAGE BASIC FUEL PRICE 25/02/2022 - 25/03/2022	1,272.865	1,249.847	1,388.295	1,409.104	1,345.679
AVERAGE UNIT OVER/(UNDER) RECOVERY 25/02/2022 - 25/03/2022	(191.258)	(183.240)	(299.094)	(314.074)	(265.837)

ANALYSIS MOVEMENT OF AVERAGE OVER/(UNDER) RECOVERY

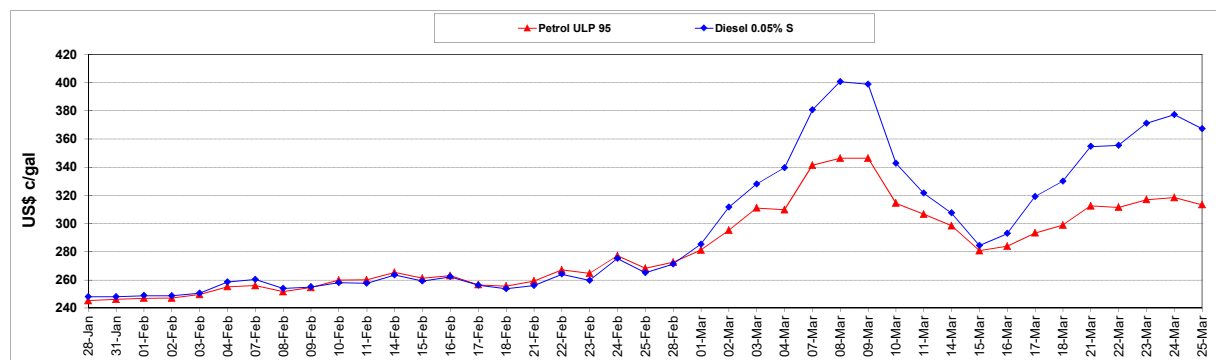
	PETROL 95	PETROL 93	DIESEL 0.05%	DIESEL 0.005%	ILL. PAR.
- MOVEMENT IN INTERNATIONAL PRODUCT PRICES	(201.415)	(193.213)	(310.172)	(325.318)	(276.575)
- MOVEMENT IN EXCHANGE RATE	10.157	9.973	11.078	11.244	10.738
AVERAGE UNIT OVER/(UNDER) RECOVERY 25/02/2022 - 25/03/2022	(191.258)	(183.240)	(299.094)	(314.074)	(265.837)

R/\$ EXCHANGE RATE - (R/\$14.5675 - 25/03/2022)

EXCHANGE RATE USED IN BASIC FUEL PRICE



INTERNATIONAL PRODUCT PRICES OF BASKET USED IN BASIC FUEL PRICE



BASIC FUEL PRICE IN SA CENTS PER LITRE

